

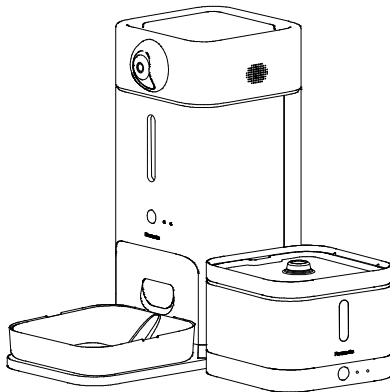
Panasonic®

User Manual Compound Pet Feeder

Model **CP-JNF04HW**

This product is for indoor use only

Table of Contents



Compound pet feeder CP-JNF04HW		
Includes	Feeder	CP-JNF04HWF
	Water dispenser	CP-JNF04HWW

Warranty record card

Safety Precautions (Please follow)	2	Preparations before use
Emergency treatments/Precautions for use	3	
Packing list	3	
Component descriptions.....	4	
Installation instructions.....	5	
Disassembly and installation instructions.....	8	

Operation Instructions	11	Usage instructions and when encountered difficulties
Cleaning instructions	13	
Indicator status descriptions/ Troubleshooting	15	
APP instructions	16	
Specifications/ Separately sold products	17	
Copyright notice	18	
After-sales service locations list	back cover	

* The final interpretation of the user manual belongs to this company

We sincerely thank you for purchasing this Panasonic product.

- Please read this manual carefully before use, use it correctly, and store it properly.
- Please ensure to read the “Safety precautions and Emergency treatments/Precautions for use” (P.2~3) carefully before use.
- This product needs to be used with a home wireless network and download the dedicated APP in order to operate normally.

Safety Precautions (Please follow)

Please read this product manual carefully before use. Once installed or used, it means that you have read the following safety guides carefully and accepted the term and instruction. Our company will not be responsible nor assume any legal responsibilities for any accidents or losses caused by improper operations.

- The degrees of harm or damage caused by incorrect usage are distinguished and explained below.



Warning

Contents that "may cause death or severe injuries"

- Do not insert and unplug the power supply with wet hands.
- When abnormalities occur on this product, please stop using it immediately and unplug the power supply.
- Make sure to use the power supply provided by this product to avoid damaging the equipment and causing safety concerns.
- Only used power supply by Unifive Technology Co. Ltd., (trademark: UNIFIVE model UHVUK3012-050020SA, the model has been certified by TUVRh CB cert no. DE-2-035745 and report no. CN220XW5 001.
- When the power supply is damaged, it must be replaced by the manufacturer, its service provider or personnel with the relevant qualifications to avoid danger.
- Please keep this product away from other electrical equipment when in use to avoid signal interference, and beware not to splash water on it causing damages to the machine body.
- Please use in indoor environments, and do not use this product at places with direct sunlight exposure to avoid affecting its functions. Please keep away from fire sources or other places that may generate high temperatures.
- Please cover or install the power supply properly and prevent pets from chewing the electrical cords, causing electric shocks and other dangers. When pets chew on cables, it may cause electricity leakage. Please pay attention to the installation location of the power supply.
- This product contains small components, please pay attention and prevent infants from accidentally swallowing them.
- This product is only suitable for cats or small dogs. It is not recommended for pets under 3 months of age to use this equipment alone.
- This electrical appliance is not intended for use by users (including children) with physiological, perceptual, mental ability, experience or knowledge deficiencies unless used safely under the supervision or guidance of the person responsible for their safety. Children should be supervised to ensure they do not play with electrical appliances.
- Please do not remove screws, repair or modify this product on your own, otherwise it may cause you to get injured or machine failures; it will also be viewed as giving up the rights of all warranties and after-sale services.
- Please check whether there is sufficient water and food inside the water bucket and food bucket before leaving for many days.



Note

Contents that "may cause mild injuries or property loss"

- Please do not place this product at high places to prevent the product from falling and causing product damages or safety problems for people and pets.
Also, to prevent pets from knocking over this product, it is recommended to place it in corners or against walls. Do not let the equipment get wet.
- Please keep the product leveled, do not tilt or flip it to prevent causing malfunctions or inability to operate. There is no anti-tilt feature when placed on a carpet or rug.
- Do not put heavy pressure or objects on top of the machine body or the camera cover.
- This product is only suitable for dry pet food; do not use wet food; also, do not place objects other than dry pet food into the food bucket, to avoid causing risks such as the equipment being blocked abnormally, electric components becoming wet and damaged, or being accidentally swallowed by pets.
- Do not place foreign objects between the water bucket and base, to avoid affecting normal operation of the water pump.

Emergency treatments

- When the abnormalities or failures described below occur, please stop using this product immediately, unplug the power supply, and contact the service station for inspection and treatment. (It may cause smoke, fire or electric shocks)

- The power supply heats up abnormally (hot).
- There are strange odors such as burning odors; there are abnormal vibrations or sounds while operating.
- It feels numb as if there is an electric shock when the product is touched.
- When there are other abnormal failures.

Precautions for use

- This product can accommodate dry pet food (including freeze-dried food) with diameters under 12 mm.
- The height of dry food stored in the food bucket should not exceed the MAX mark.
- The number of grams of food dispensed for each serving may differ due to the shapes, sizes and densities of storage conditions the dry food, and the actual capacity will also be affected.
- Please disconnect the power while cleaning. The food bucket, food bowl, and bowl tray can be washed with water; the body of the machine and the top cover of the camera cannot be washed with water; the water bucket can be washed with water, and components such as its buttons and base cannot be soaked or washed with water to avoid damaging the internal electronic components. Please use a dry cloth to wipe the machine body, top cover of the camera and other parts that cannot be washed with water.
- Please keep the contacts dry; if they are dirty, please wipe it clean with a dry soft cloth.
- When you want to stop using this product, please disconnect the power, empty the food, clean the product, let it dry, and then store it.
- The minimum amount of water added must at least exceed the water pump to prevent no water from being pumped out, and do not exceed the MAX mark.
- It is recommended to clean the components that come in contact with water (such as water bucket, water tray and connecting pipes) once a week to ensure optimal usage effects.
- The products have been tested at the factory, so it is normal if there are some water stains.
- If the product is not used for an extended period of time or if the product needs to be moved, please unplug the power supply.
- When the camera rotates, the camera microphone will be turned off, resulting in no sound in the live video and video playback during rotation. This is normal.
- The camera will automatically calibrate after the power is turned on. To ensure that the camera is positioned properly, do not manually rotate the camera.
- The appliances it must only be supply at SELV (Safety Extra Low Voltage).

Packing list

Pet feeder	Pet water dispenser	Manual	Filter
1 unit	1 unit	1	1
Stainless steel food bowl (includes bowl tray)	Power supply	Desiccant	Filter cotton
1 set	1	1	1

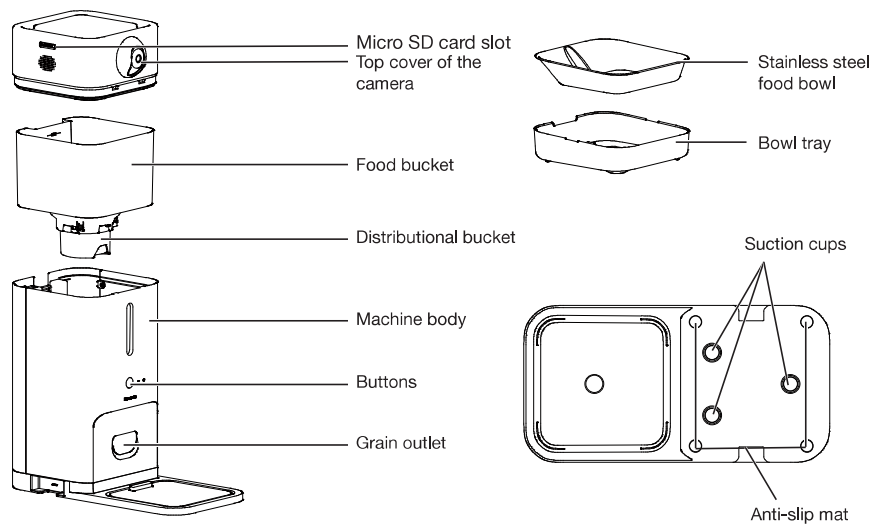
※ Manual & Warranty record card & Power supply: Placed on top of the food bowl.

※ Pet feeder, hereinafter referred to as feeder; pet water dispenser, hereinafter referred to as water dispenser.

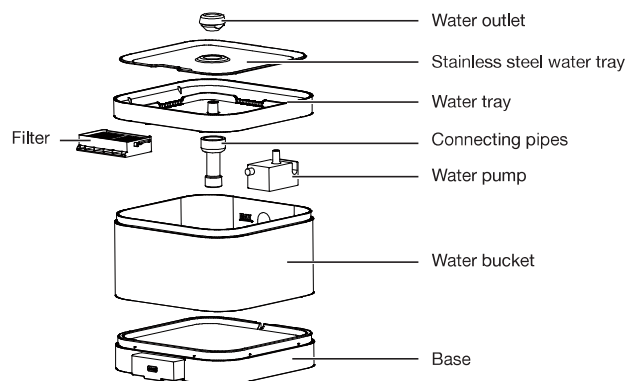
Component descriptions

Feeder

※ A lens protector is included on the top cover of the camera (please remove the protector before use)



Water dispenser



※ The products have been tested at the factory, so it is normal if there are some water stains.

※ When the product images are slightly different from the actual product, the actual product shall prevail.

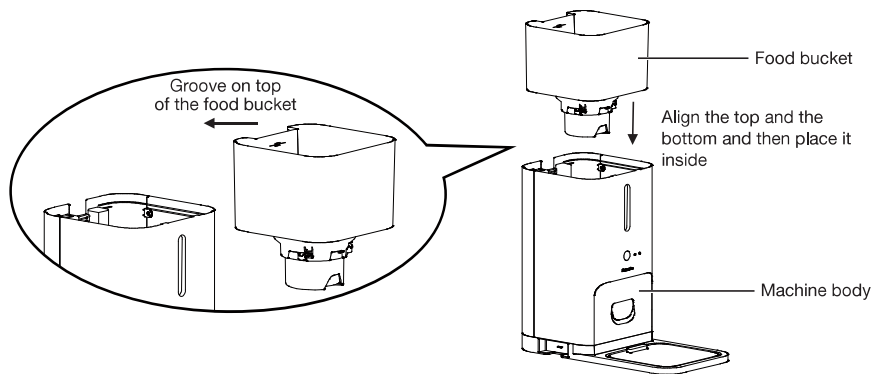
Installation instructions

Feeder

1 Installing the food bucket

Face the groove on top of the water bucket to the back of the machine body, and place the food bucket into the machine body to complete the installation.

※ Note: It is normal for the food bucket to make some creaking sounds while operating.

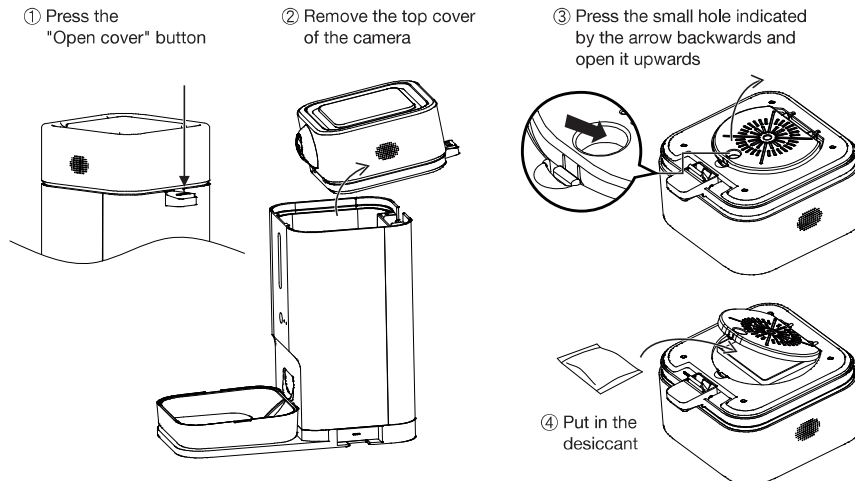


2 Installing the desiccant

Open the top cover of the camera, ①press the "open cover" button, ②lift it with both hands and remove the top cover of the camera, ③press the small hole indicated by the arrow backwards and open it upwards, ④add the desiccant.

Reinstall the top cover, press it downwards, and buckle-in the "Open cover" button.

※ Hint: It is recommended to change the desiccant once every 30 days, and do not use if it is damaged.



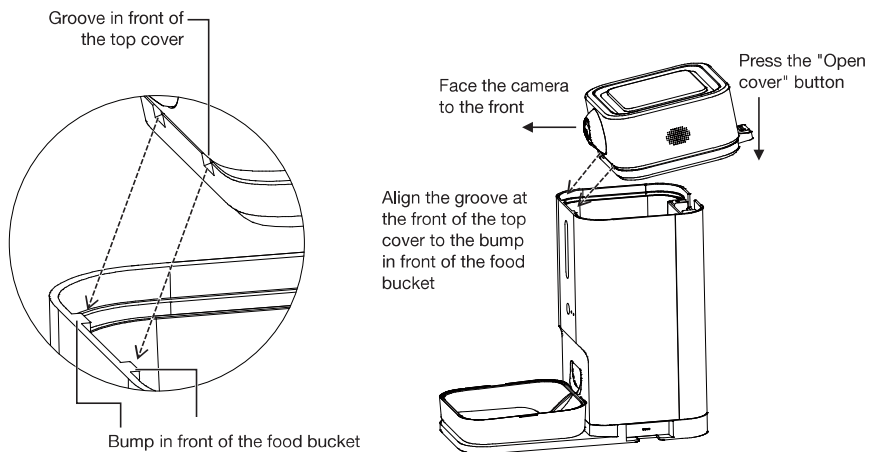
Installation instructions

Feeder

3 Installing the top cover of the camera

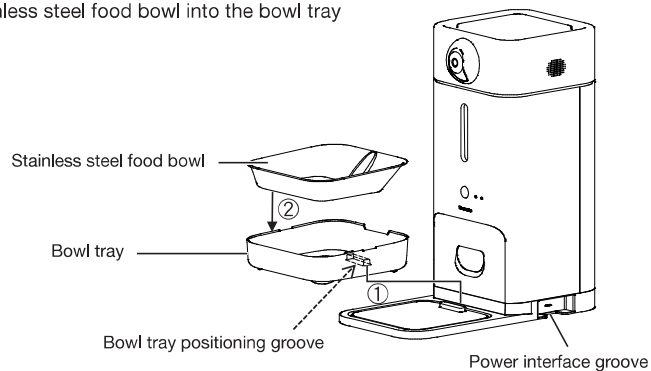
Hold the top cover of the camera with both hands (with the camera end facing the front), then align the groove in front of the top cover of the camera to the bump in front of the food bucket, press the "Open cover" button, and then push the top cover of the camera downwards.

※ Avoid touching the lens part when holding the camera to avoid leaving fingerprints/sweat stains and effecting the image quality.



4 Installing the food bowl

- ① Please first insert the groove of the bowl tray into the host to position it
- ② Then place the stainless steel food bowl into the bowl tray



※ When moving the feeder, use both hands to hold the power interface grooves on the two sides at the bottom of the feeder, then move it.

※ When disassembling, please first remove the stainless steel food bowl, then push the bowl tray forward gently and then lift it up.

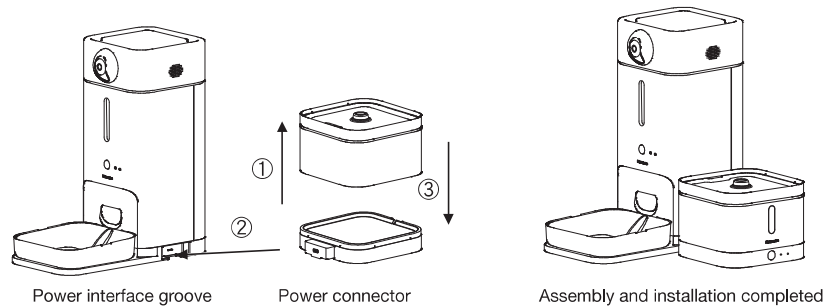
Installation instructions

Feeder and water dispenser

5 Assembly and installation

Insert the power connector at the back of the water dispenser into any one of the Power interface groove on the left and right sides of the machine body according to your needs.

※ Each feeder only supports connection to one water dispenser; if 2 water dispensers are connected simultaneously, the APP cannot operate normally.

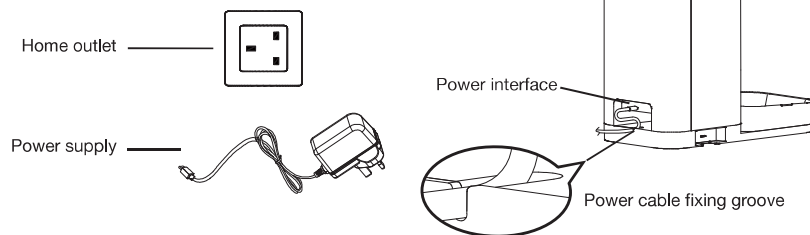


※ How to correctly change the installation direction of the water dispenser

- ① When the water bucket is detached from the base, please hold the water bucket with both hands while the water tray is installed on the water bucket, and lift the water bucket up.
- ② Move the base and insert the Power interface groove on the other side of the machine body
- ③ Put the water bucket back

6 Connect the power

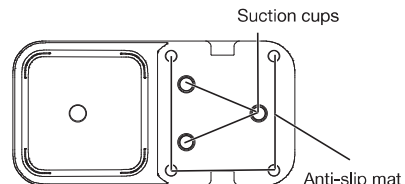
Take out the power supply and connect it to the power interface at the bottom of the machine body, and insert the power plug into a home outlet. The power cable can be fixed in place in the power cable fixing groove.



7 Fixing the machine in place

Press the machine down so the suction cups at the bottom and suck tightly onto the ground properly.

(The floor must be smooth and flat; avoid using it on carpets or wet grounds)

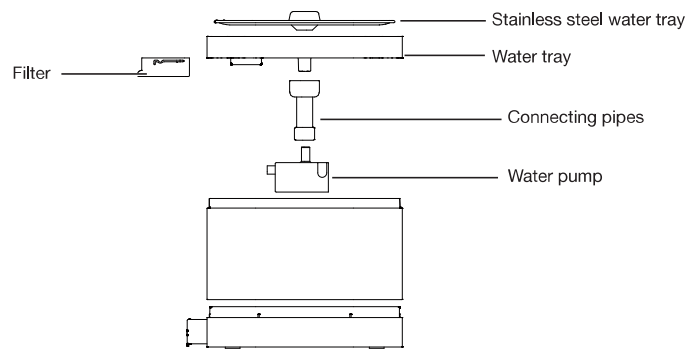


Disassembly and installation instructions

Water dispenser

1 Pick up the stainless steel water tray, and then remove the water tray, connecting pipes, water pump and filter sequentially to clean them.

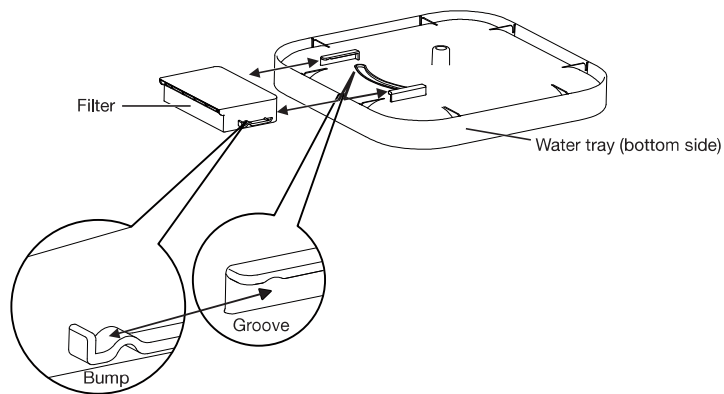
※ Note: Please use both hands to remove the stainless steel water tray and water tray steadily to prevent the water in the water tray and remaining water in the filter from splashing, and damaging the machine body or power interface.



2 Before using the filter for the first time, soak it for 5 minutes first for the filter to achieve optimal work effects.

Install the cleaned filter into the water tray, and then put the stainless steel water tray onto the water tray to complete the assembly.

(Replacing the filter: Remove the water tray and replace the filter; please refer to the following icons when installing the filter. It is recommended to change the filter once every 30 days.)

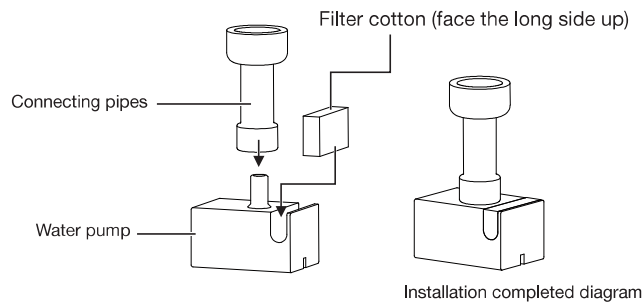


Please fit the bumps on both the left/right sides of the filter into the grooves of the water tray slide rail properly

Disassembly and installation instructions

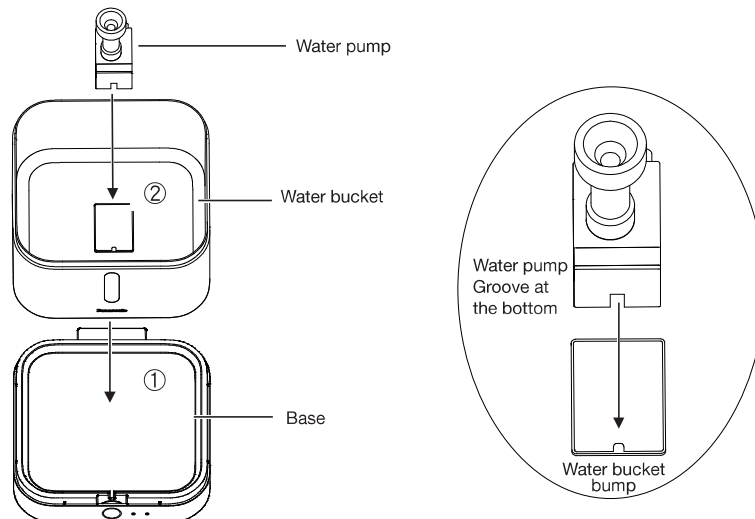
Water dispenser

- 3 Face the long side of the filter cotton of the water pump upwards, and install it in the fixing groove of the water pump. The top of the filter cotton should be the same height as the top of the water pump. Then insert the connecting pipe into the water pump to connect it.



- ※ The filter cotton is already installed in place when this product is sold.
- ※ It is recommended to change the filter cotton once every 30 days. (Depending on the water quality)

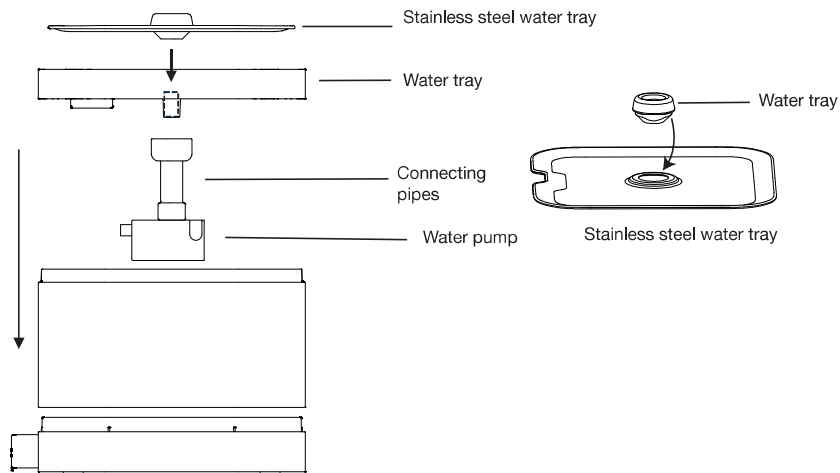
- 4 The water bucket can be removed alone for cleaning; after it is cleaned,
- ① Place the water bucket onto the base of the water dispenser (face the transparent water level window on the front of the water tank to the button side of the base),
 - ② Align the groove at the bottom of the water pump to the bump at the bottom of the water bucket, and place it at the bottom of the water bucket to complete the installation.



Disassembly and installation instructions

Water dispenser

- 5 Face the narrower side of the water outlet downwards, then install it on the stainless steel water tray. Then install the water pump and water tray onto the water bucket sequentially, and then align the stainless steel water tray with the round column of the water tray and push it down tightly to complete the installation.

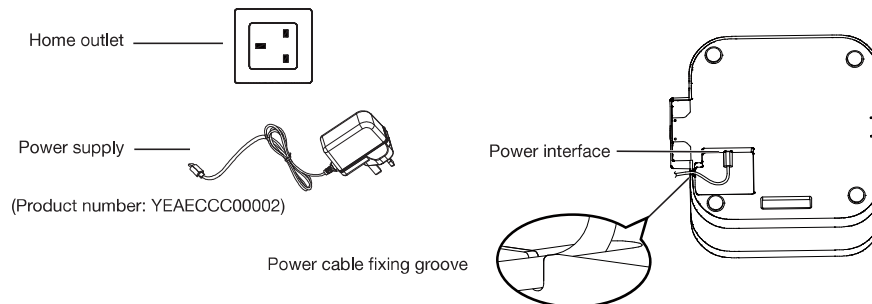


- ※ Note: When changing the water, please long-press the water dispenser button for 2 seconds and wait for it to enter standby mode before disassembling the water dispenser. When the sound of the water flow is louder, please check whether the filter set is installed properly.

- 6 Connecting the power(When the water dispenser is used alone, please purchase an additional power supply for this product from the service station)

Take out the power supply and connect it to the power interface at the bottom of the machine body, and insert the power plug into a home outlet.

The power cable can be fixed in place in the power cable fixing groove.



- ※ Note: When the water dispenser is not used alone, the power will be supplied from the feeder, and there is no need to connect a power supply.

Operation Instructions

Feeder

■ Powering On

The machine will enter standby status after powering on, and the camera will perform power on self-check for approximately 90 seconds. It will turn to the back and then return to the center in the front.

If the product is used for the first time or it is used for the first time after it was reset to the default factory settings, after the machine powers on and performs self-check, mobile phone connection needs to be performed.

If it is not used for the first time, after the machine powers on and performs self-check, it will enter normal operation status directly if the WiFi connection is normal.

Note: There sometimes are gear sounds when the machine is performing self-check, this is because the machine is calibrating and it is normal.

■ Powering Off

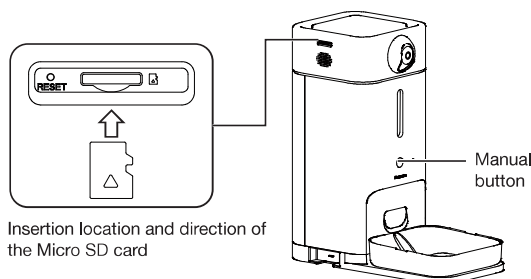
Disconnect the power to power off.

■ Manual button controls

Short-pressing the button once has no effect to prevent accidental touch.

Short-press twice to dispense 1 serving of grains (approximately 15 g; the number of grams of grains dispensed each serving differs according to the shapes/sizes/densities/storage of the dry food).

Press and hold for 3 seconds to lock/unlock the button. (the two-color indicator light flashes twice when the setting is successful)



■ Change desiccant notice

When the feeder detects that the desiccant needs to be replaced, the APP will push a reminder notice.

After replacing the desiccant, please reset the timer in the APP. It is recommended to change the desiccant once every 30 days.

■ Grain jam notice

When the feeder detects that there are grain jams in the food bucket, the APP will push a reminder notice.

Please disconnect the power first, and then remove the food bucket and check whether there is grain jam. After clearing the blockage, install the food bucket and reconnect the power.

■ Installing the Micro SD card on the top cover

You can purchase a SD card yourself and install it in the card slot at the top of the right side of the top cover (Compatible with microSDXC (Class U3 or V30), supporting FAT32 format from 4GB to 256GB.)

※ When removing the SD card, the card might quickly eject. Please push the card inwards first and then release it slowly, then remove the card.

※ If you need to use recording related functions, please install a SD card and format it.

Micro SD capacity	Recording time
4 GB	3-9 hours
8 GB	6-18 hours
16 GB	12-36 hours
32 GB	1-3 days
64 GB	3-5 days
128 GB	7-10 days
256 GB	14-20 days

※The capacity comparison table is for reference only

■ Using the APP

After connecting the APP, regular feeding schedules can be set in the APP to deliver food at regular intervals with fixed quantities. (Please refer to P16 for connecting the APP)

■ Microphone

When the microphone is on, please keep the mobile phone at least 5 meters or more from the feeder to avoid causing echoes and other noises.

Operation Instructions

Water dispenser

■ Standby status/Mode button controls

When using the product for the first time or after restoring default factory settings, the machine will enter standby status (the blue light is constantly on).

If it was only power disconnected and restarted, water will be dispensed according to user settings.

Short-press the button once: The water pump will start dispensing water (continuous water dispensing mode by default)

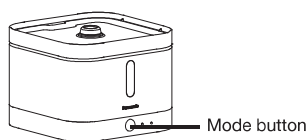
Short-press the button twice: Switch the water dispensing mode.

Long-press the button for 2 seconds: Water pump stops dispensing water.

※ When switching the water dispense mode, an orange light will flash according to the mode:

Continuous water dispensing: Orange light flashes twice.

Intermittent water dispensing: Orange light flashes 3 times.



■ Operation modes

Continuous water dispensing mode: The water dispenser dispenses water continuously.

Intermittent water dispensing mode: The water dispenser dispenses water intermittently, and can be set through the APP (initial setting value: Operate for 3 minutes then stops for 3 minutes)

■ Replacing the filter

It is recommended to replace the filter once every 30 days (please refer to the filter replacement reminder function of the APP)

Soak the new filter thoroughly for 5 minutes before replacing the filter, and slightly rinse it before replacing.

For the health of your pet, please replace the filter frequently based on the usage situation of the filter.

■ Insufficient water notice

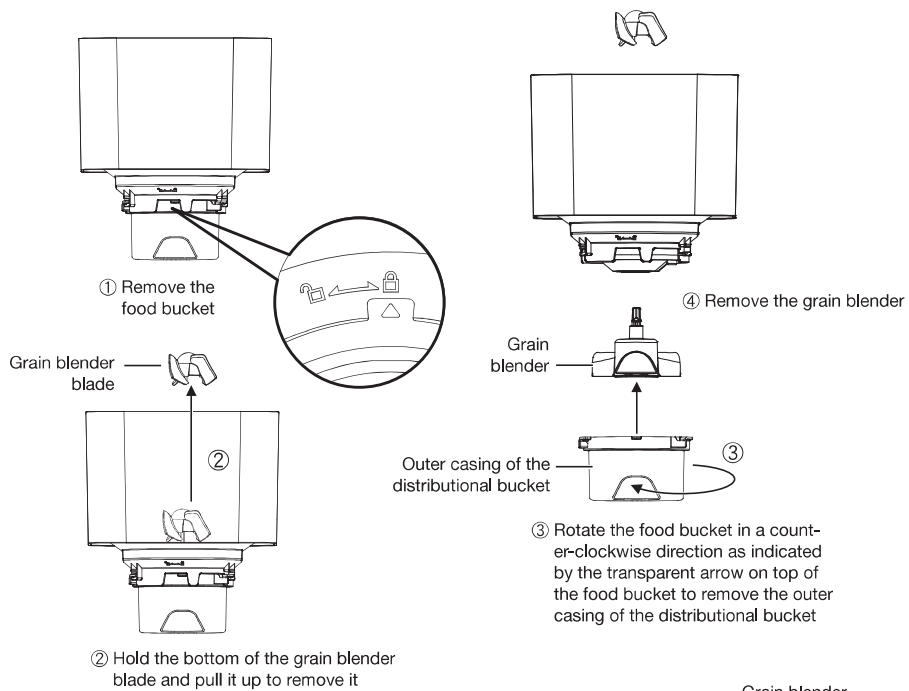
When the water dispenser detects that there is insufficient water, the water pump will stop dispensing water and the APP will push a reminder notice.

※ Note: When there are abnormalities such as reduced water volume or water not dispensed, please confirm the cleaning. If the problem cannot be resolved, please contact a service station for replacement.

Cleaning instructions

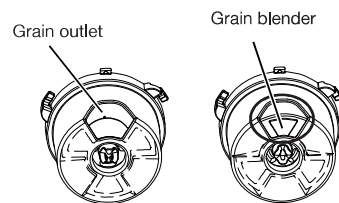
Food bucket

① Remove the food bucket, ② place the food bucket on the table, fix the food bucket in place with one hand and use the other hand to pull the bottom of the grain blender blade up, ③ rotate the food bucket in a counter-clockwise direction as indicated by the transparent arrow on top of the food bucket to remove the outer casing of the distributional bucket, ④ remove the grain blender



Feeder

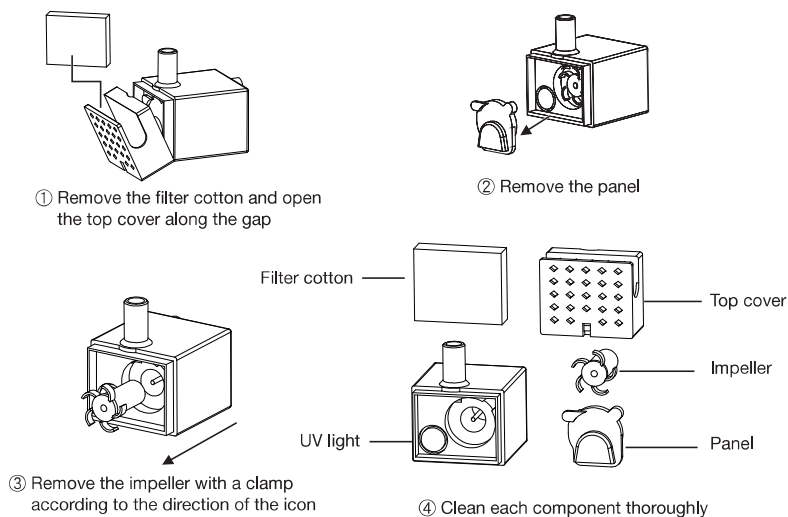
- (1) After removing the stainless steel food bowl, tilt the bowl tray slightly upwards and it can be removed.
 - (2) Clean the food bucket, grain blender, distributional bucket and food bowl one by one.
 - (3) After cleaning and drying them, reinstall the grain blender, distributional bucket, food bucket and food bowl one by one.
- ※ Note: Please do not let the outside of the machine body get wet.



※ After installing the grain blender, outer casing of the distributional bucket and grain blender blade sequentially in the same way as the disassembling method, please align the blade of the grain blender to the grain outlet, and place them closely together as shown in the image above in order for the grain to be delivered smoothly.

Cleaning instructions

Water pump cleaning



※ It is recommended to clean it weekly to prevent dirt from blocking the waterway, and causing poor water quality, poor water dispensing and other abnormalities.

※ Note: Make sure to reinstall the top cover after cleaning the water pump, and avoid direct exposure of eyes and skin to the UV light during operation to prevent damage.

Cleaning and maintenance of the entire machine

- Do not expose it to direct sunlight to avoid accelerating the yellowing of the machine.
- Please disconnect the power and then clean the entire machine, and make sure to keep the power connector at the bottom dry. Wipe the power interface groove regularly with dry cloth. Moisture and dust may cause fires or electric shocks.
- Do not clean the equipment with bleach, alcohol or other chemical reagents; you can wipe the machine body with clean and soft cloth dipped with water to remove the dirt.
- Do not place or soak the water dispenser and water pump in boiling water.
- If grain powder accidentally fell into the machine body, please wipe it off with clean soft cloth or clean it with a vacuum cleaner.
- When not used for a long time, please clean the equipment, dry it, and then store it in the package in the original packing order, and keep it properly.

Item	Feeder	Water dispenser
Washable parts	Food bucket Food bowl Bowl tray	Water tray Connecting pipes Water pump Water bucket
Unwashable parts	Top cover of the camera Machine body	Base

Indicator status descriptions/Troubleshooting

Feeder

Indicator status	Operation status
Blue light constantly on	Feeder entered normal operation status
Orange light flashes quickly	Feeder connecting to WiFi/pairing with mobile phone
Orange light goes off	Feeder entered normal operation status
Orange light flashes slowly	Open the mobile APP and perform pairing

Abnormal status descriptions	Treatment measures
Blue light flashes slowly	Check whether there is sufficient grain; if not, please supplement the grain immediately
Blue light flashes quickly	After disconnecting the power, confirm whether grains or foreign objects jammed the grain blender, and clear it
Orange light on constantly	<ul style="list-style-type: none"> ● Check whether the mobile APP is installed normally, and update it to the latest version ● Check whether the top cover of the camera is installed in place ● Long-press the button for 10 seconds to restart the recorder ● Restart the feeder after disconnecting the power

Water dispenser

Indicator status	Operation status
Blue light constantly on	Water dispenser entered normal operation status
Orange light flashed once	Prompt that the water pump is starting or stopping water dispensing
Orange light flashes twice	Prompt that entered continuous water dispensing mode
Orange light flashes three times	Prompt that entered intermittent water dispensing mode
Orange light on constantly	Water dispenser used alone status ※Connecting 2 water dispensers to the feeder simultaneously is abnormal usage (please refer to the descriptions in P.7)

Abnormal status descriptions	Treatment measures
Blue light flashes slowly	Check whether there is sufficient water; if not, add water immediately
Blue light flashes quickly	Confirm whether the water pump is installed in place after disconnecting the power
The water volume of the water pump is small or no water is dispensed	<ul style="list-style-type: none"> ● Confirm whether the water pump is installed in place after disconnecting the power ● Check whether the water pump filter cotton is blocked, clean or replace the filter cotton ● Check whether hair got into the water pump, clean the water pump impeller ● Check whether the location where the water dispenser is placed is tilted, please place it at a leveled place
Water pump has noises	<ul style="list-style-type: none"> ● Confirm whether the water pump is installed in place after disconnecting the power ● Check whether the water pump filter cotton is blocked, clean or replace the filter cotton ● Check whether hair got into the water pump, clean the water pump impeller

APP instructions

Connecting the APP

- 1 Download the “Panasonic Pet EN” APP from App Store or Google Play Store and install it.
Or scan the QR Code to the right with your mobile phone to download and install.

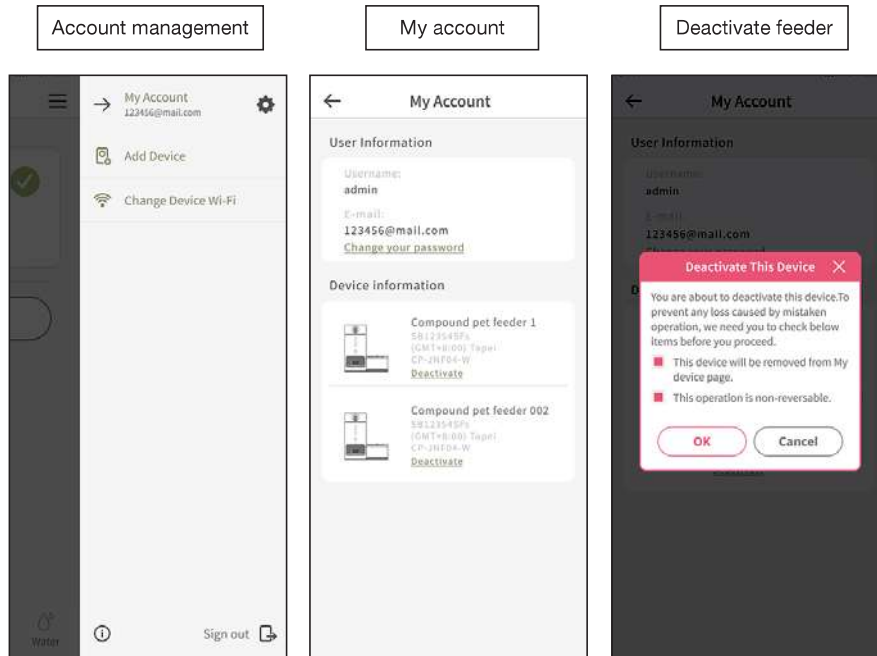


App Store



Google Play

- 2 Register an account after installation is complete and login to the APP.
One unit can only connect to one account; this account can be shared with multiple users.
- 3 Click “New Device” on the home page, enable WiFi on the mobile phone, and make sure that the feeder is connected to the Internet, then follow the instructions on the APP to bind the equipment.
 - Due to the upgrades and updates of the APP, actual operations may be slightly different with the descriptions above. Please operate by following the instructions of the current APP. (Hint: Supports WiFi 2.4G/5G dual-band)
 - It is recommended for Android phones to use Android 7.0 or above systems, and it is recommended for Apple phones to use iOS 15.6 or above systems.



APP instructions

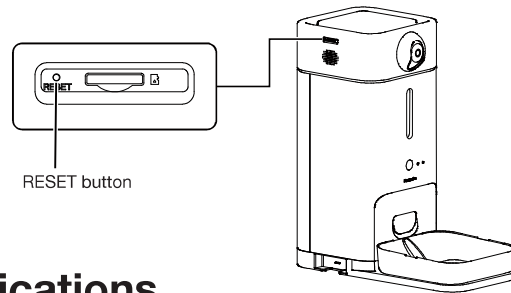
APP - Disconnect feeder connection

To disconnect the Internet connection between the feeder and the equipment:

1. Tap the feeder equipment on the home page.
2. Click the menu at the right corner and choose "My account".
3. Click "Deactivate" below then "Send".

Then it will disconnect the Internet connection between the feeder and the equipment, and the feeder will be deactivated.

- ※ While deactivated, the feeding record, feeding plans and desiccant time settings will all be cleared.
- ※ When WiFi connection is abnormal, please use a paper clip or the mobile phone SIM card pin to long-press the RESET button for 3 seconds and then remove the pin, a beep will be heard and the default factory settings are restored. It needs to be paired again.



Specifications

Compound Pet Feeder	
Model	CP-JNF04HW
Product color	White
Main material	Food grade plastic/304 stainless steel/silicone
Rated input	DC 5 V / 2 A
Rated capacity	2 L water storage / 3 L grain storage
Rated power	9 W
Dimensions (width x depth x height) (approximately)	400x390x443 mm
Weight (approximately)	Approximately 5 kg

Separately sold products

Please purchase from a dealer or direct service station

Component name	Model
Filter set (includes filter & filter cotton)	CP-ANF04F1
Desiccant	CP-ANF04D1

Copyright notice

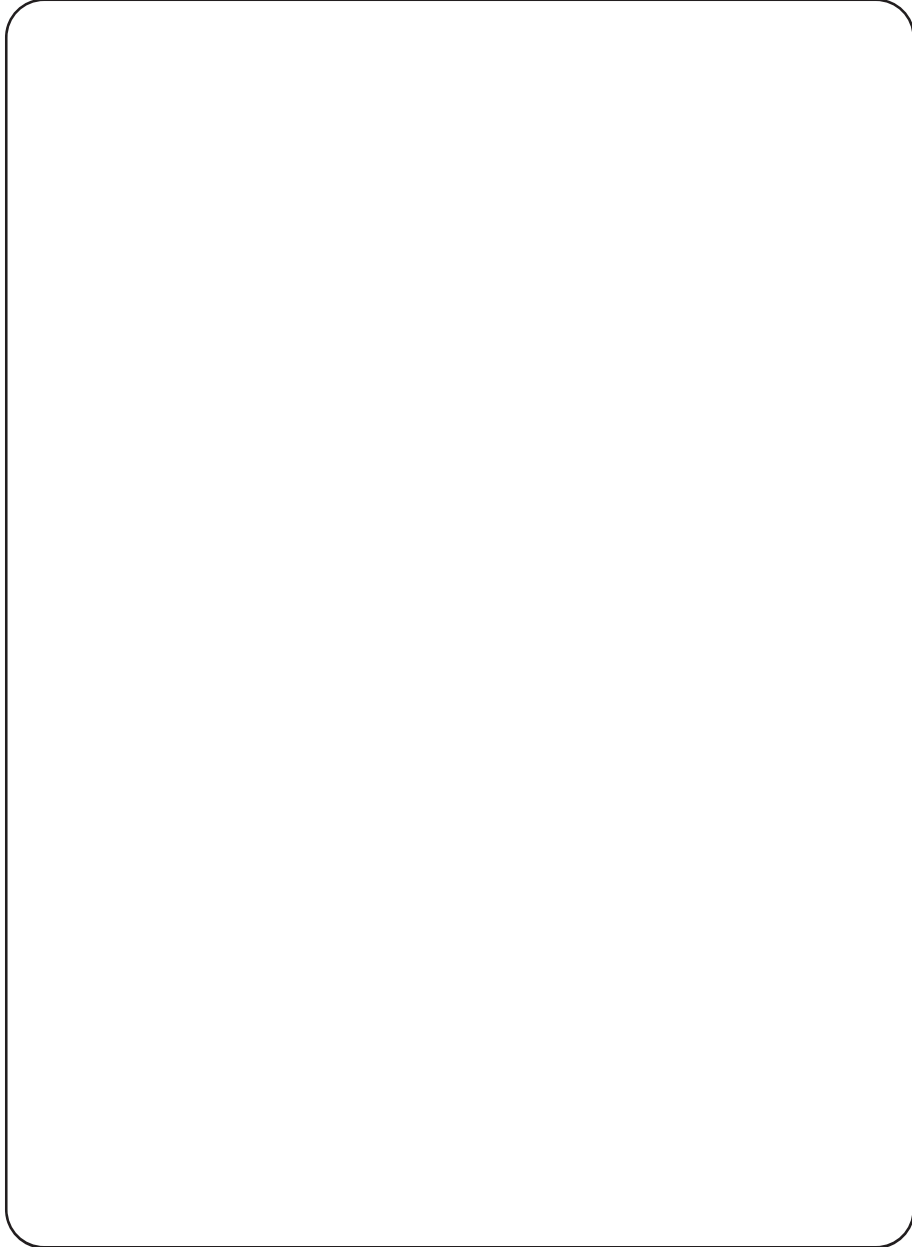
- App Store is a service mark of Apple Inc.
- iPhone is a trademark of Apple Inc., registered in the U.S. and other countries. The iPhone trademark is used under license from AIPHONE CO., LTD.
- Android and Google Play are trademarks or registered trademarks of Google LLC.
- Panasonic Corporation uses the above trademarks under license. Other names, company names, and product names described in this manual are trademarks or registered trademarks of their respective companies. Furthermore, some ™ and ® marks are not listed in this manual.
- About the software

This product is composed of the following types of software.

- (1) Software developed by Panasonic Corporation (Panasonic) or developed exclusively for Panasonic
- (2) Panasonic licensed software held by a third party
- (3) Open source software under conditional licensing

Although it is expected that the software classified as (3) above can be used independently, no warranty of "commodity" or "compliance for a specific purpose" is implied, and no warranty is given at all.

MEMO





SHUN HING GROUP

SHUN HING ELECTRIC WORKS AND ENGINEERING CO., L TD.

Office : 9/F., Peninsula Centre, 67 Mody Road, Tsimshatsui East, Kowloon, H.K.

Tel : 2861 2767 Fax : 2865 6706

Website : <http://www.shew.com.hk>

E-mail : shew@shunhinggroup.com

Maintenance and Repair Service:

SHUN HING ELECTRIC SERVICE CENTRE LTD.

Address : 11/F, Shun Hing Centre, 2 Shing Yiu Street, Kwai Chung, N.T., H .K.

Tel : 2406 5666 Fax : 2408 0316

Website : <http://www.shesc.com>

Customer Service Centre

Address:

1) 1/F, Shun Hing Centre, 2 Shing Yiu Street, Kwai Chung, N.T.

2) 9/F., Block B, Peninsula Centre, 67 Mody Road, Tsim Sha Tsui, Kowloon.

3) Avenida de Venceslau de Morais, No. 193-199, 5 andar-I, Edf. Industrial Nam Leng, Macau

For the latest information of Hong Kong and Macau service center, please visit

Website : <http://www.shesc.com>

Panasonic Corporation

Web Site : <http://www.panasonic.com/>

© Panasonic Taiwan Co., Ltd. 2025



YFM264C398ZA PTW PRINTED IN TAIWAN